

HOW TO CONNECT TO A WI-FI HOTSPOT

CARDBoard Project A Digital Connection For All

When is Wi-Fi needed?

Wireless fidelity also known as Wi-Fi allows either your computer, smartphone, or any device to connect to the internet when needed.



What are hotspots and public Wi-Fi networks?

A hotspot works much like regular Wi-Fi and lets you connect to the internet.

When you use a hotspot, your device connects to an access point through Wi-Fi technology to share internet access.

Hotspots give your device nearby Wi-Fi connectivity and can be either created from your own phone or public places like:



When using public Wi-Fi, avoid entering personal information (like banking or passwords) on unknown networks, and always make sure you are connecting to a trusted hotspot.

- **Libraries:** A reliable and comfortable place to use free Wi-Fi.
- **Coffee Shops & Restaurants:** Chains like Starbucks and many local establishments offer free Wi-Fi to customers.
- **Retail Stores & Malls:** Many department stores, grocery stores (near the deli area), and shopping malls provide free Wi-Fi access.
- **Transportation Hubs:** You can find free Wi-Fi in many airport terminals.
- **Public Spaces:** Check for city-run Wi-Fi in public parks, plazas, and government buildings.
- **Educational Institutions:** Public Wi-Fi is often available on university campuses and at schools.



How to access Public Wi-Fi on a laptop?

The Wi-Fi login can be entered by clicking on the symbol located on one of the corners of the screen.



Step 1:

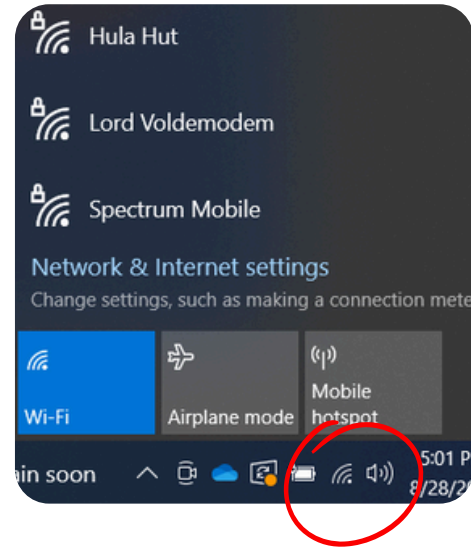
Ask an employee for the Wi-Fi network name and password.

Step 2:

Click on the Wi-Fi symbol (you may see multiple networks) and click on the network name that was given to you.

Step 3:

Once you find the correct network name, click connect and enter in the password that was given to you.

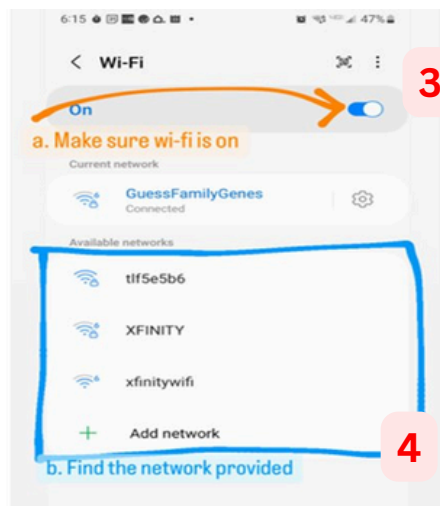
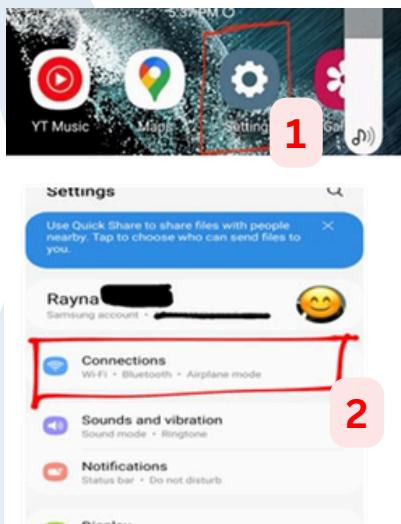
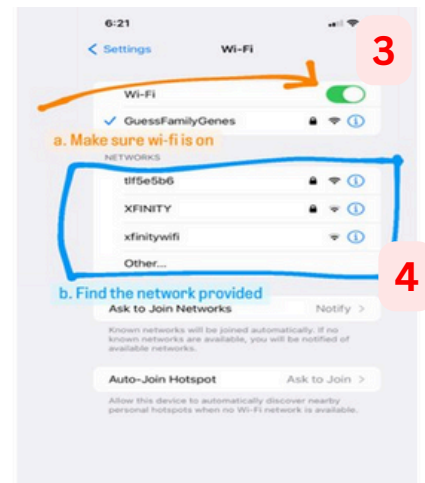
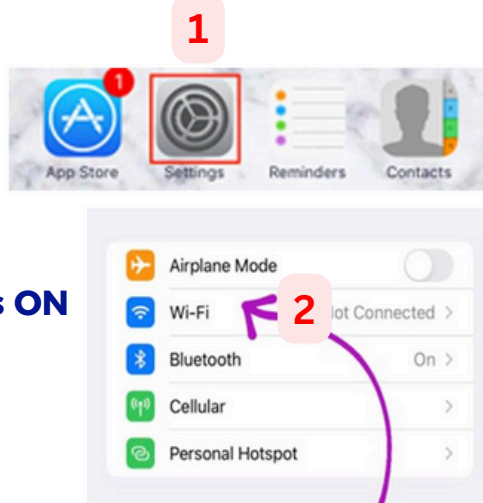


How to access Public Wi-Fi on Smartphones?

iPhone

Accessing Public Wi-Fi

- Step 1:** Go to settings
- Step 2:** Click on Wi-Fi
- Step 3:** Make sure Wi-Fi is ON
- Step 4:** Find a network provided



Android

Accessing Public Wi-Fi

- Step 1:** Go to settings
- Step 2:** Click on connections
- Step 3:** Make sure Wi-Fi is ON
- Step 4:** Find a network provided.